



KwikKraft 15 Seat Tour Boat *Overview & Specifications*



Boat Specifications:

- L.O.A** 5.9m approx
- Beam:** 2.3m
- Deadrise:** 10 – 12 degrees constant

Seats: 4 rows of seats, (1st row, 2 + driver / 2nd row, 4 / 3rd row, 4 / 4th 4 across) total, **14 + driver**.

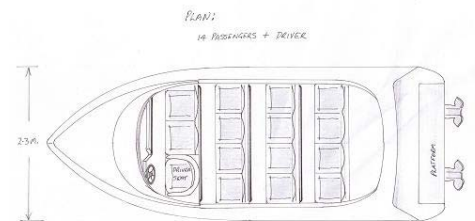
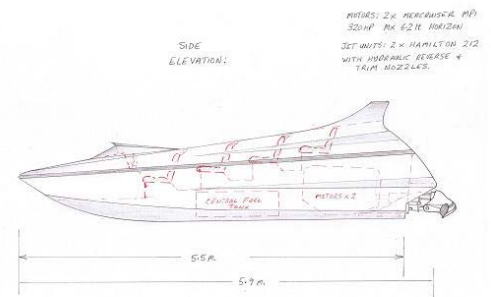
Engine Package Option 1: Single 400hp big block V8

Jet Units: 1 x Hamilton 212 Jet Unit
(Other Jet Unit options also available)

Engine Package Option 2: Twin 315-320hp petrol V8's:

(Other Petrol & Diesel engine options available)
Jet Units: 2 x Hamilton 212 Jet Units
(Other Jet Unit options also available)

Paint: Fully painted to suit requirements



Twin Engine Option Above



10B Newnham St, Rangiora, Christchurch, 7400 New Zealand
 P: +64 3 313 3560 F: +64 3 313 3921
sales@kwikkraft.co.nz www.kwikkraft.co.nz
www.youtube.com keyword 'kwikkraft'



Specs Continued:

- Foot rests and grab rails for each passenger
- Individual drivers bucket seat
- Alloy windscreen with deflector
- Full upholstered seats, dash and side coamings
- Foam filled bow for buoyancy
- Semi sealed engine compartment for buoyancy
- Rear wing with air intakes for motor
- Portifino style transom with rear platform
- Central mounted fuel tank forward of engine fully plumbed
- Storage areas each side of engine, assessable from engine compartment hood

Boat construction:

Frame and stringer construction

Stringers: 10mm

Frames: 4mm

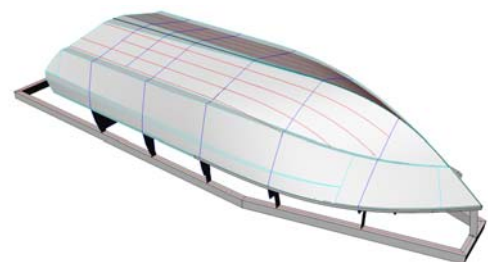
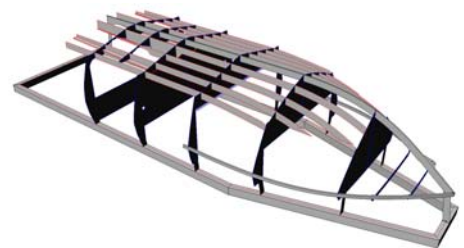
Centre hull: 10mm

Hull: 6mm

Topsides: 4mm

Transom: 6mm.

*Boat fully constructed using **marine** grade alloy.*





Standard Package Boat fixtures and features:

- Drive shaft coupling to suit application
- Painted to the colour of your choice. Two colours allowed as standard.
- Twin battery set up with 3 way master switch
- 2 x heavy duty bilge pumps with auto float switches
- 3 way bilge switch (manual/off/auto)
- Full gauge set on dash to suit engine management
- 8 way switch panel
- 9kg driver operated automated fire extinguisher system to engine compartment.
- Hand held fire extinguisher mounted mid cockpit area assessable from walkway
- Tinned wiring to all electrical components
- Hydraulic steering
- DC plug outlet for cell ph. etc.
- Boat cover over seat areas.

Motors:

Engine Package Option 2

2 x Mercruiser based 5.7 Litre 315HP MPI factory marine engines, fitted with:

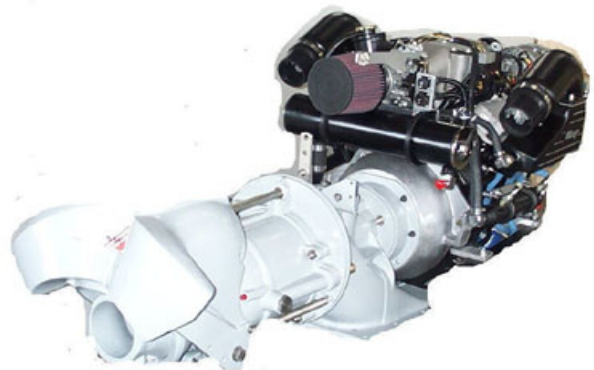
1. Exhaust Manifold system. Aluminium centre discharge type, high rise & dry faced complete with rubber outlet adaptors.

Weight saving over cast iron amounts to approx 90kg collectively.

2. Closed Cooling system. High capacity heat exchangers with integral header tanks. Front engine mounted and plumbed.

3. SAE, rear mount, aluminium bell housings with top drive / reverse mount marine starter motors installed.

4. Full wiring looms & engine instrumentation supplied with plug in harness at engines.



Jet unit:

Hamilton 212 Jet Unit to suit above engines.



Notes:

These boats are built to suit most river / lake and slight sea conditions as standard but can be constructed to suit individual requirements.



- * Boats are built to rule 80 MSA standards in New Zealand
- * Noise can be controlled
- * All boats are built to a extremely high standard of workmanship
- * Quality materials and components are used

